



# Jane Austen Society of North America Southwest

## September 2016 Newsletter

### In This Issue

[Jane Austen in the News](#)

[Fall Meeting](#)

[Reading Groups](#)

[Connect on Social Media](#)

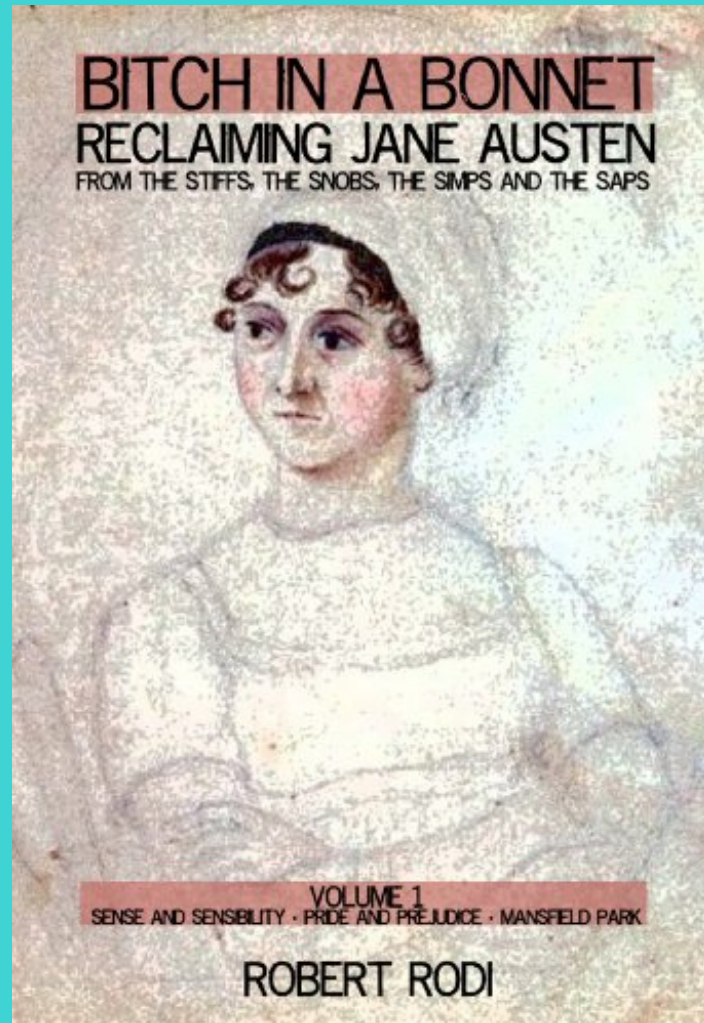
### Jane Austen in the News!



This year's  
[Austentatious  
Afternoon Tea](#) on  
Nov. 6 will be held at  
the French Estate in  
Orange.



A new exhibit at the  
Folger Shakespeare  
Library in  
Washington, D.C.,  
features "[Will & Jane:  
Shakespeare, Austen  
and the Cult of](#)



## Join us for the JASNA-SW Fall Meeting on Saturday, Oct. 1!

Saturday, October 1  
9:45 a.m.-noon  
Donald Wright Auditorium  
[Pasadena Central Library](#)  
285 E. Walnut Street  
Pasadena CA 91101

Cost: \$15

[Celebrity,"](#) now through Nov. 6. (It features the infamous shirt from the 1995 *Pride and Prejudice*, alas without Colin Firth in it.)



Colin Firth, however, will appear in [Bridget Jones's Baby](#), which opens in cinemas on September 16.

Join Our Mailing List!



Visit the [JASNA-Southwest](#) website for more about programs, reading groups and more.

And look for our brand-new website coming soon!

We encourage everyone to wear a bonnet or hat to this event, in keeping with our theme.

*Registration information coming soon*

Our guest speaker will be Robert Rodi, author of the *Bitch in a Bonnet* blog (and two books of the same name). He has authored nine novels, including *Baby* (2012) as well as numerous works of nonfiction. He currently is working on his first Austen-inspired fiction, which takes the three-page *Edgar and Emma* Austen wrote in her teens and expands it into a full-length comedy of manners.



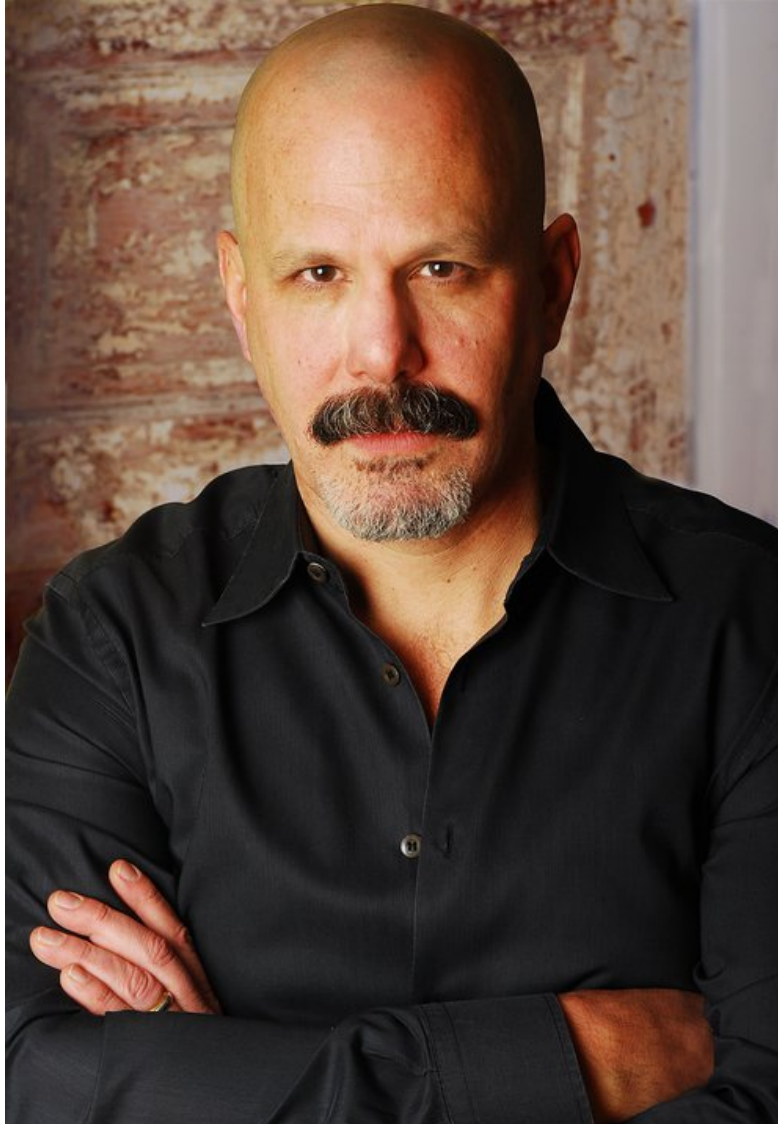
Here's a taste of his perspective -- from his "manifesto" that inspired his blog on Austen:

"Jane Austen was -- is -- a sly subversive, a clear-eyed social Darwinist, and the most unsparring satirist of her century. She's wicked, arch, and utterly merciless. She skewers the pompous, the pious, and the libidinous with the animal glee of a natural-born sadist. She takes sharp, swift swipes at the social structure and leaves it, not lethally wounded, but shorn of its prettifying garb, its flabby flesh exposed in all its naked grossness. And then she laughs.

"Despite her admittedly limited palette, her psychological acuity easily matches Shakespeare's, and her wit as well; like him, she's also violently allergic to sentimentality of any stripe. ... Her tongue could kill at twenty paces.

"How did someone whose vision is so darkly, even bleakly, comic -- whose work brims with vicious, gabbling grotesques, most of whom are never adequately (or even minimally) punished for their sins (as Dickens, not so many years later, felt compelled to punish his) -- become the patron saint of the turgid, chest-heaving, emotionally pornographic genre called 'Regency Romance'?

"I don't know, and I don't care. I only care to stop it -- to fire the opening salvo that will, I hope, ignite the barrage of indignation that brings this travesty to a halt and restores, once and for all, the spit and vinegar to Jane Austen's public profile, raising her to the pantheon of gadflies that she might take her place beside Voltaire and Swift, Twain and Mencken. My goal is to make the world acknowledge, at long last, the bitch in the bonnet."



## Reading Groups Upcoming Meetings/Info



*Our new Westside/405 Reading Group;  
new members welcome!*

*Send us photos from your reading group*

so we can share them here, on our Facebook page  
and/or the JASNA-SW website.

Sunday, September 11, 2-4 p.m.

**South Bay Reading Group**

*What Jane Austen Ate and Charles Dickens  
Knew* by Daniel Pool

New and returning members are welcome.

For more information, contact [Jeanine Holguin](#),  
805-444-8999.

Sunday, September 11

**Pasadena Area Reading Group**

*Sense and Sensibility* by Joanna Trollope

This group is at capacity and cannot accept  
new members. Current members may contact  
[Susan Ridgeway](#), 626-357-1397.

Saturday, September 17, 11 a.m.-2 p.m.

**San Gabriel Valley Reading Group**

*Cranford* by Elizabeth Gaskell

Location: Santa Catalina branch library,  
Pasadena

The group will host a potluck lunch. Please  
bring something to share.

For more information, contact [Kelly Duir](#), 909-  
967-6630.

Saturday, September 17, 11:30 a.m.

**Ventura Reading Group**

Location: E.P. Foster Library, 651 E. Main  
Street, Ventura, California 93001

*The Romance of the Forest* by Ann Radcliffe  
*Jane Austen's Letters* (Deirdre Le Faye, ed.):  
Letters 130-145

For more information, contact [Linda Terry](#), 805-  
302-0855.

Sunday, September 18, 12:30 p.m.

**Orange County Reading Group**

"Painting Jane Austen's *Emma*"

Hands-on painting workshop, guided by  
Anmarie Thomas

Location: 20 Pergola, Irvine

For more information, contact [Viki Barie](#), 714-  
309-6702, or [Anmarie Thomas](#), 818-640-  
6372.

Sunday, September 18, 2-4 p.m.

**San Fernando Valley Reading Group**

*Emma* by Jane Austen

For more information, contact [Cheryl Cole](#),  
310-422-5475.

Saturday, October 8, 1:30 p.m.

**Westside/405 Reading Group**

*A Lady of Quality* by Frances Hodgson Burnett

Location: home of Syrie James

For more information, contact [Karen Berk](#),  
310-477-6753.

Sunday, October 9, 1:30-4:30 p.m.

**West Los Angeles Reading Group**

*Poor Emma* by Reginald Hill and *The Janeites*

by Rudyard Kipling

Discussion leader: Dr. Charles Lynn Batten

This group is at capacity and cannot accept  
new members. Current members may contact  
[Clara Browda](#), 310-278-8759.

Saturday, October 15, 11:30 a.m.

**Ventura Reading Group**

Location: E.P. Foster Library, 651 E. Main  
Street, Ventura, California 93001

*Emma: A Modern Retelling* by Alexander McCall  
Smith

*Jane Austen's Letters* (Deirdre Le Faye, ed.):  
Letters 146-154

For more information, contact [Linda Terry](#), 805-  
302-0855.

Sunday, October 16, 6 p.m.

**Santa Monica Reading Group**

*The Princess de Cleves* by Madame de La  
Fayette

For more information, contact [Diana Birchall](#),  
310-394-2196.

Saturday, November 5, 12:30 p.m.

**Long Beach Reading Group**

*Clarissa: Or the History of a Young Lady*

(second half) by Samuel Richardson

For more information, contact [Gerda Kilgore](#),  
562-496-4452.

Sunday, November 6

**Pasadena Area Reading Group**

*The Chronicles of Barsetshire* by Anthony

Trollope

This group is at capacity and cannot accept new members. Current members may contact [Susan Ridgeway](#), 626-357-1397.

Sunday, November 13, 1-3 p.m.

**NEW Riverside Reading Group**

*Lady Susan* by Jane Austen

*Love and Friendship* by Whit Stillman

Location: home of Vicki Broach

Contact [Christi Hendry](#) for more information.

Sunday, November 13, 2-4 p.m.

**San Fernando Valley Reading Group**

*Dean's Watch* by Elizabeth Goudge

For more information, contact [Cheryl Cole](#), 310-422-5475.

Saturday, November 19, 11:30 a.m.

**Ventura Reading Group**

Location: E.P. Foster Library, 651 E. Main Street, Ventura, California 93001

*Lieutenant Hornblower* by C.S. Forester

*Jane Austen's Letters* (Deirdre Le Faye, ed.):

Letters 155-CEA/3

For more information, contact [Linda Terry](#), 805-302-0855.

*Additional Groups*

**Riverside County Reading Group**

Meetings are held at the Temecula Public Library, 30600 Pauba Road, Temecula, in Community Room B. For more information, contact [Rebecca Weersing](#), 951-595-7046.

**San Diego Region**

Although San Diego is a separate JASNA region, many JASNA-Southwest members are interested in San Diego JASNA events and vice versa. For information on upcoming San Diego JASNA meetings, contact [Jeanne Talbot](#), 808-342-0666.

**Join us on Facebook**

Are you on Facebook? So is JASNA-SW! Stay connected in between our meetings and e-newsletter updates, share your Austen-related

stories, favorites, travel and more with fellow Janeites!

