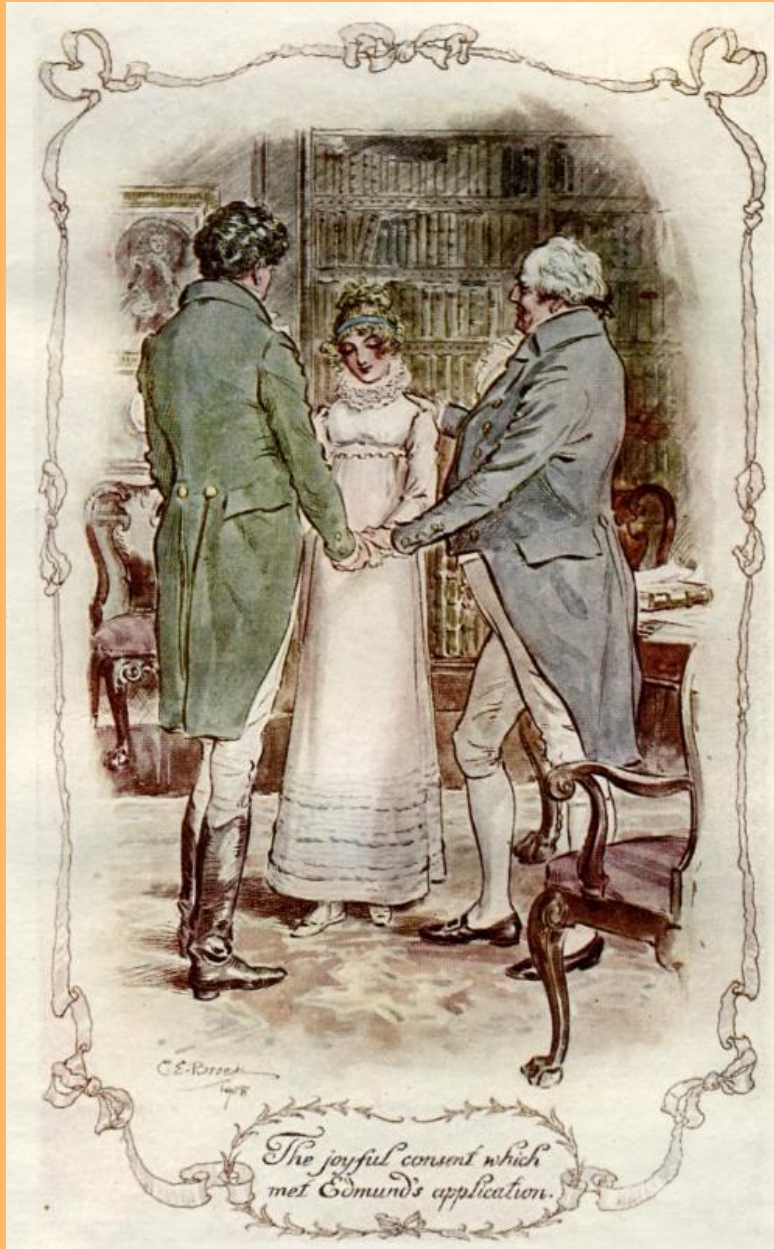




Sent 5/4/2014

# Jane Austen Society of North America Southwest May 2014 News



## In This Issue

[Jane Austen in the News](#)

[Spring Meeting](#)

[May Calendar](#)

[Summer Events](#)

[Connect on Social Media](#)

## Spring Meeting: In the Garden with Fanny Price

## Jane Austen in the News!



The new film Belle, bringing more attention to Jane Austen's time. [Read more here.](#)



Northanger Abbey gets a rewrite by Val McDermid. Read the author's commentary on revamping Jane's "outlier" novel by [clicking here.](#)

[Join Our Mailing List!](#)



***Register Today!***

[Click here](#) to register for the Spring Meeting that will celebrate 200 years of *Mansfield Park*

**Saturday, May 31, 2014**

**9:00am Registration**

**10:00am - 4:00 pm Program**

**UCLA Faculty Center**

**480 Charles E Young Drive East**

**Los Angeles CA 90024**

The meeting will be held at the UCLA Faculty Center and will focus on two of the novel's major themes: the improvement of the estate and the troubling issues of slavery.

The program features a special keynote address from Kim Wilson, author of *In the Garden with Jane Austen*, a book capturing the essence and beauty of the traditional English garden that Austen herself would have known and visited. In addition, Dr. Anne Mellor presents *Fanny Price and Slavery*, a discussion on the controversial topic of slavery in 19th century England. Distinguished UCLA Professor of Biology, Dr. Philip Rundel, gives us *An Introduction to the Mildred E. Mathias Botanical Garden*.

### **NOTE: PROGRAM CHANGE**

Because Dr. John Halperin, who was originally scheduled to speak on the autobiographical elements

[Visit Our Website](#) for more about programs, reading groups, and more.

in *Mansfield Park*, has had to cancel owing to ill health, our own Terry Ryan has agreed to present a short talk inspired by Halperin's published musings on Jane Austen as heroine of this novel of her more mature years. And rounding out the program, the always entertaining and erudite Diana Birchall will intrigue us with her speculations on what really happened in the garden that fateful day at Sotherton!

## May Calendar

**Saturday, May 17 at 11:00am - JANE AUSTEN by Margharita Laski with the San Gabriel Valley Reading Group.**

Please join the San Gabriel Valley Reading Group at the Hill Avenue Branch Library for a potluck and to discuss the life of Jane Austen. For more information on the San Gabriel Valley Reading Group, [email Kelly Duir](#) or call her at (909) 967-6630.

**Saturday, Saturday May 17, 11:30am - GEORGE KNIGHTLY, ESQUIRE: CHARITY ENVIETH NOT by Barbara Cornthwaite with the Ventura Reading Group.**

Please join the Ventura Reading Group at the E.P. Foster Library for a discussion of George Knightly, Esquire: Charity Envieth Not, a retelling of Jane Austen's Emma. For information about the Ventura Reading Group, [please click here for their blog](#).

**Sunday, May 18, 7:00pm - EX LIBRIS: CONFESSIONS OF A COMMON READER by Anne Fadiman with the Pasadena Reading Group.**

Please join the Pasadena Reading Group to discuss Ex Libris: Confessions of a Common Reader, a delightful collection of essays portraying a love affair with reading. For more information, current group members may [email Susan Ridgeway](#), or you may call her at 626-357-1397. NOTE: This group is at capacity and can't accept new members, please see the information on the San Gabriel Valley Reading Group below.

**Sunday, May 18, 12:30pm - THE REAL JANE AUSTEN: A LIFE IN SMALL THINGS by Paula Byrne with the Orange County Reading Group.**

Please join the Orange County Reading Group for a discussion of *The Real Jane Austen: A Life in Small Things* to share in a conversation about this new publication that looks into the smallest details of Ms. Austen's life. For information about the Orange County Reading Group, please [email Maryann Pelensky](mailto:Maryann.Pelensky) or call her at 949-363-1165.

**Sunday, May 18 at 2:00pm - MARY BARTON by Elizabeth Gaskell with the San Fernando Valley Reading Group.**

Please join the San Fernando Valley Reading Group as they discuss a *Mary Barton*, a novel set in mid-1800s Manchester. For information, please [email Gina Gualtieri](mailto:Gina.Gualtieri) or call her at (818)788-4383.

**Saturday, May 24, 1:30pm - MANSFIELD PARK by Jane Austen, with the Long Beach Reading Group.**

Please join the Long Beach Reading Group as they read *Mansfield Park* by Jane Austen to commemorate the 200th anniversary of the publication. For more information about the Long Beach Reading Group, please [email Gerda Kilgore](mailto:Gerda.Kilgore) or call her at (562) 496-4452.

## Summer Jane Austen Events

Jane Austen Summer Program at the University of North Carolina, Chapel Hill. This four-day symposium runs from June 12-15, 2014. The 2014 program is on *Sense and Sensibility*. Anyone with a passion for all things Austen is welcome to attend. For more information, to see photos from last summer, or to register, go to the JASP website, [janeaustensummer.org](http://janeaustensummer.org).



7<sup>th</sup> Annual *Jane Austen*  
**FESTIVAL**

*Presented by the* JANE AUSTEN SOCIETY OF NORTH AMERICA - GREATER LOUISVILLE REGION

**July 19th & 20th, 2014**

*For more information,* [jasnalouisville.com](http://jasnalouisville.com)

Held at the scenic 1790s National Landmark, LOCUST GROVE, 561 Blankenbaker Lane, Louisville, KY 40207



## Connect to JASNA-SW!

Are you on Facebook? So is JASNA-SW! Stay connected in between the Monthly Calnedars with all things related to Jane Austen and get the latest JASNA-SW news on our Facebook page. [Click here to like!](#)

We are also on Twitter! Follow JASNA-SW for updates, news and info relating to JASNA-SW and all things Jane Austen.